



Bramshott
PLACE
VILLAGE

Frobisher House

2 and 3 Bedroom Apartments



Image shows typical view of large apartment block.

CLARKE  GAMMON
WELLERS

Telephone: 01428 722800

All apartments provide spacious accommodation and have en-suite wet rooms and second bathrooms, some have a study. All have patios or balconies and most have bay windows some with views across the grounds. Lifts are provided to all floors.



Ground Floor

APARTMENT 121	METRIC	IMPERIAL
KITCHEN	2.84M x 1.94M	9'4" x 6'4"
LIVING/DINING	4.89M x 7.18M	16'0" x 23'7"
BEDROOM 1	2.59M x 3.81M	8'6" x 12'6"
BEDROOM 2	2.06M x 3.81M	6'9" x 12'6"
BATHROOM	2.24M x 1.94M	7'4" x 6'4"

APARTMENT 122	METRIC	IMPERIAL
KITCHEN/DINING	3.12M x 5.28M	10'3" x 17'4"
LIVING ROOM	5.72M x 4.03M	18'9" x 13'2"
BEDROOM 1	5.47M x 3.28M	17'11" x 10'9"
EN SUITE	2.34M x 1.61M	7'8" x 5'3"
BEDROOM 2	4.12M x 2.59M	13'6" x 8'6"
BATHROOM	2.24M x 1.94M	7'4" x 6'4"

APARTMENT 123	METRIC	IMPERIAL
KITCHEN	3.85M x 1.94M	12'8" x 6'4"
LIVING/DINING	4.39M x 7.30M	14'5" x 23'11"
BEDROOM 1	2.92M x 3.84M	9'7" x 12'7"
EN SUITE	1.61M x 2.34M	5'3" x 7'8"
BEDROOM 2	2.64M x 3.84M	8'8" x 12'7"
BATHROOM	2.24M x 1.94M	7'4" x 6'4"

APARTMENT 124	METRIC	IMPERIAL
KITCHEN	3.85M x 1.94M	12'8" x 6'4"
LIVING/DINING	2.94M x 7.30M	9'8" x 23'11"
BEDROOM 1	2.64M x 3.84M	8'8" x 12'7"
EN SUITE	1.61M x 2.06M	5'3" x 6'9"
BEDROOM 2	1.96M x 3.84M	6'5" x 12'7"
BATHROOM	2.24M x 1.94M	7'4" x 6'4"

Apartment 122

Apartment 123

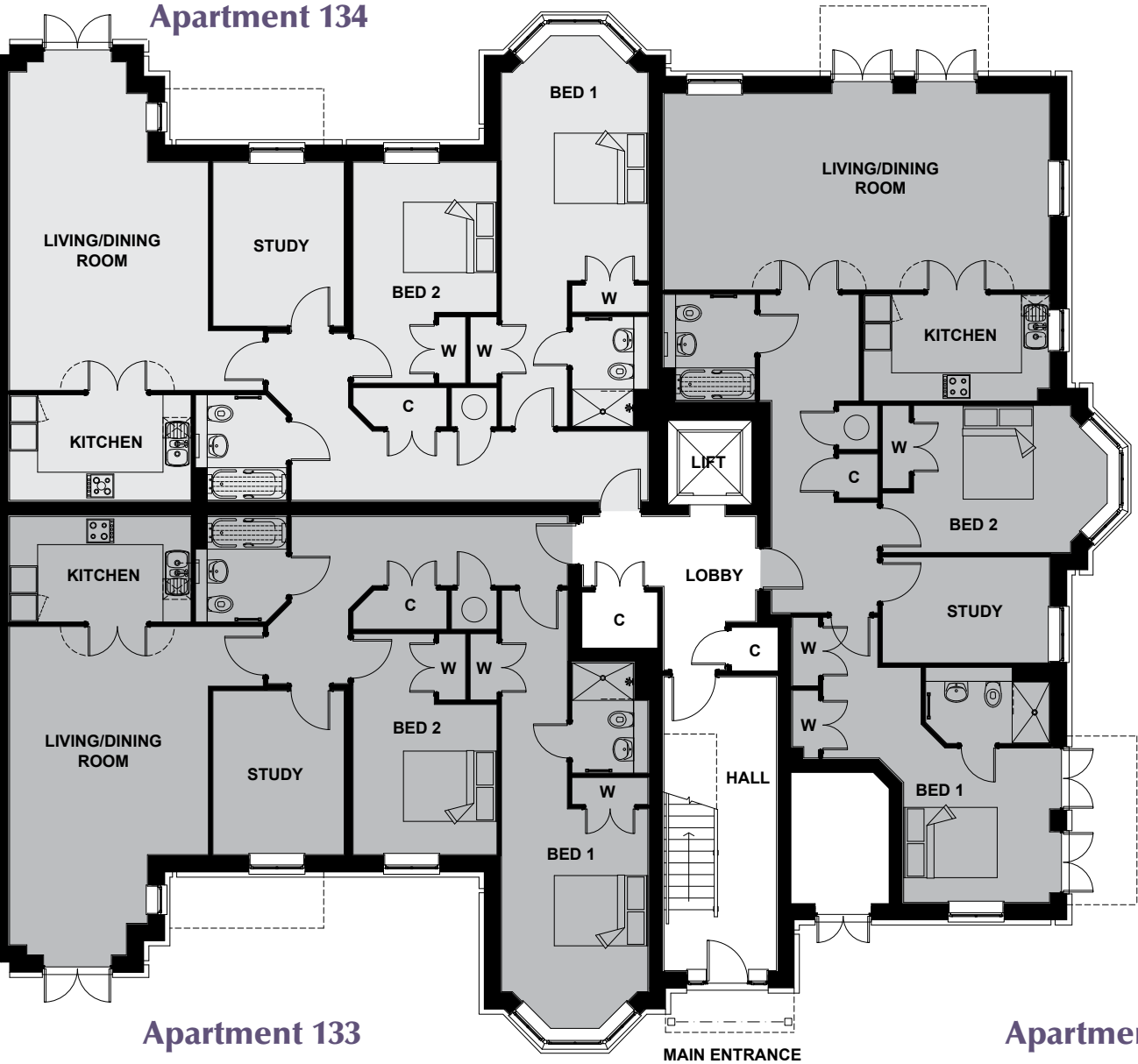


Apartment 121

Apartment 124

W = Wardrobe C = Cupboard

Ground Floor



APARTMENT 133	METRIC	IMPERIAL
KITCHEN	3.87M x 2.24M	12'8" x 7'4"
LIVING/DINING	4.24M x 7.00M	13'11" x 22'11"
BEDROOM 1	3.11M x 4.73/9.40M	10'3" x 15'6"/30'10"
EN SUITE	1.61M x 2.34M	5'3" x 7'8"
BEDROOM 2	3.06M x 4.70M	10'1" x 15'5"
BATHROOM	1.94M x 2.24M	6'4" x 7'4"
STUDY	2.80M x 3.49M	9'2" x 11'5"

APARTMENT 134	METRIC	IMPERIAL
KITCHEN	3.87M x 2.24M	12'8" x 7'4"
LIVING/DINING	4.24M x 7.00M	13'11" x 22'11"
BEDROOM 1	3.11M x 5.27/8.39M	10'3" x 17'3"/27'6"
EN SUITE	1.61M x 2.34M	5'3" x 7'8"
BEDROOM 2	3.06M x 4.70M	10'1" x 15'5"
BATHROOM	1.94M x 2.24M	6'4" x 7'4"
STUDY	2.79M x 3.49M	9'2" x 11'5"

APARTMENT 135	METRIC	IMPERIAL
KITCHEN	3.96M x 2.26M	13'0" x 7'5"
LIVING/DINING	8.23M x 4.18M	27'0" x 13'8"
BEDROOM 1	3.11/ 5.47M x 3.27/6.10M	10'2"/18'0" x 10'9"/20'1"
EN SUITE	2.64M x 1.61M	8'8" x 5'3"
BEDROOM 2	4.85M x 3.12M	15'11" x 10'3"
BATHROOM	1.94M x 2.25M	6'4" x 7'5"
STUDY	3.56M x 2.24M	11'8" x 7'4"



First Floor

APARTMENT 125	METRIC	IMPERIAL
KITCHEN/DINING	5.38M x 3.26M	17'8" x 10'8"
LIVING ROOM	5.72M x 5.13M	18'9" x 16'10"
BEDROOM 1	3.11M x 5.16M	10'3" x 16'11"
EN SUITE	1.61M x 2.25M	5'3" x 7'4"
BEDROOM 2	2.64M x 3.81M	8'8" x 12'6"
BATHROOM	2.24M x 1.94M	7'4" x 6'4"

APARTMENT 126	METRIC	IMPERIAL
KITCHEN/DINING	3.12M x 5.37M	10'3" x 17'8"
LIVING ROOM	5.72M x 4.03M	18'9" x 13'2"
BEDROOM 1	5.47M x 3.28M	17'11" x 10'9"
EN SUITE	2.34M x 1.61M	7'8" x 5'3"
BEDROOM 2	4.12M x 2.59M	13'6" x 8'6"
BATHROOM	2.24M x 1.94M	7'4" x 6'4"

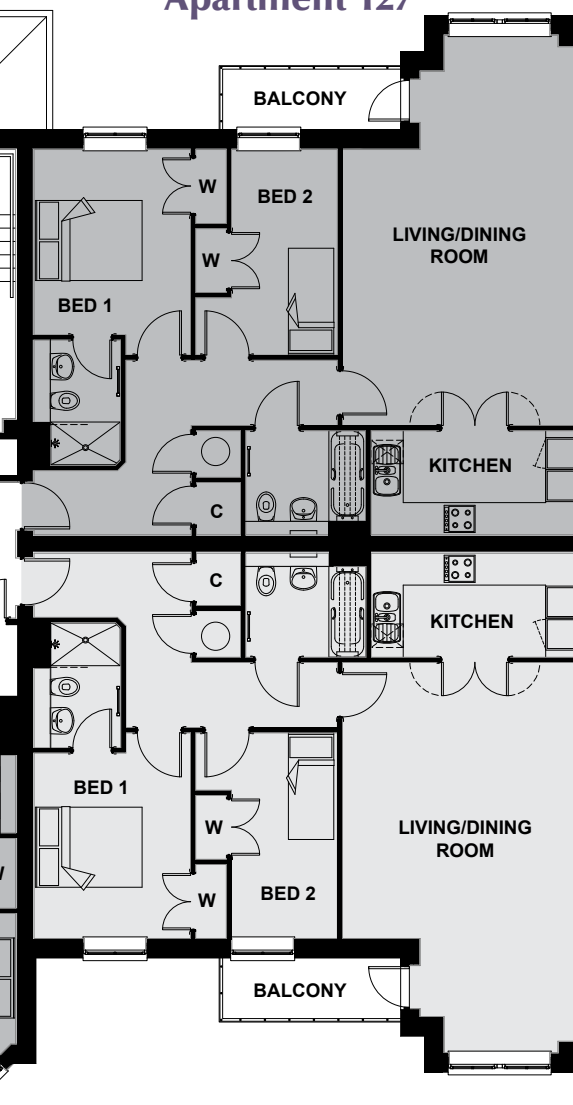
APARTMENT 127	METRIC	IMPERIAL
KITCHEN	3.85M x 1.94M	12'8" x 6'4"
LIVING/DINING	4.39M x 7.30M	14'5" x 23'11"
BEDROOM 1	2.92M x 3.84M	9'7" x 12'7"
EN SUITE	1.61M x 2.34M	5'3" x 7'8"
BEDROOM 2	2.64M x 3.84M	8'8" x 12'7"
BATHROOM	2.24M x 1.94M	7'4" x 6'4"

APARTMENT 128	METRIC	IMPERIAL
KITCHEN	3.85M x 1.94M	12'8" x 6'4"
LIVING/DINING	4.39M x 7.30M	14'5" x 23'11"
BEDROOM 1	2.92M x 3.84M	9'7" x 12'7"
EN SUITE	1.61M x 2.34M	5'3" x 7'8"
BEDROOM 2	2.64M x 3.84M	8'8" x 12'7"
BATHROOM	2.24M x 1.94M	7'4" x 6'4"

Apartment 126



Apartment 127



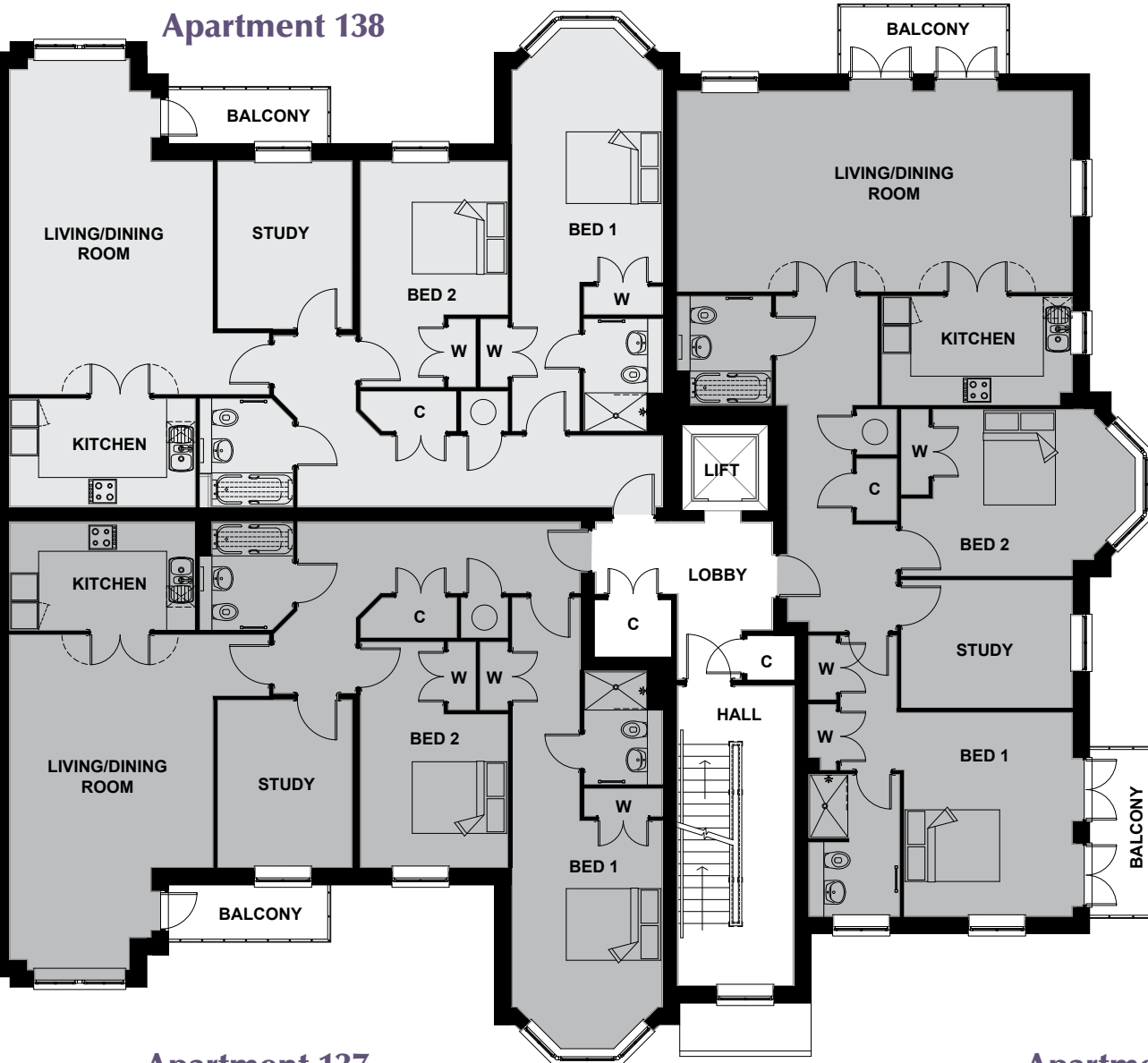
Apartment 125

Apartment 128

W = Wardrobe C = Cupboard

First Floor

Apartment 138



Apartment 137

Apartment 139

APARTMENT 137	METRIC	IMPERIAL
KITCHEN	3.87M x 2.24M	12'8" x 7'4"
LIVING/DINING	4.24M x 7.00M	13'11" x 22'11"
BEDROOM 1	3.11M x 4.79/9.47M	10'3" x 15'9"/31'1"
EN SUITE	1.61M x 2.34M	5'3" x 7'8"
BEDROOM 2	3.06M x 4.70M	10'1" x 15'5"
BATHROOM	1.94M x 2.24M	6'4" x 7'4"
STUDY	2.80M x 3.49M	9'2" x 11'5"

APARTMENT 138	METRIC	IMPERIAL
KITCHEN	3.87M x 2.24M	12'8" x 7'4"
LIVING/DINING	4.24M x 7.00M	13'11" x 22'11"
BEDROOM 1	3.11M x 5.33/8.46M	10'3" x 17'6"/27'9"
EN SUITE	1.61M x 2.34M	5'3" x 7'8"
BEDROOM 2	3.06M x 4.70M	10'1" x 15'5"
BATHROOM	1.94M x 2.24M	6'4" x 7'4"
STUDY	2.79M x 3.49M	9'2" x 11'5"

APARTMENT 139	METRIC	IMPERIAL
KITCHEN	3.96M x 2.26M	13'0" x 7'5"
LIVING/DINING	8.23M x 4.18M	27'0" x 13'8"
BEDROOM 1	3.50/ 5.47M x 4.25/5.84M	11'6"/18'0" x 13'11"/19'2"
EN SUITE	1.87M x 2.95M	6'2" x 9'8"
BEDROOM 2	4.91M x 3.47M	16'1" x 11'4"
BATHROOM	1.94M x 2.25M	6'4" x 7'5"
STUDY	3.56M x 2.67M	11'8" x 8'9"



Second Floor

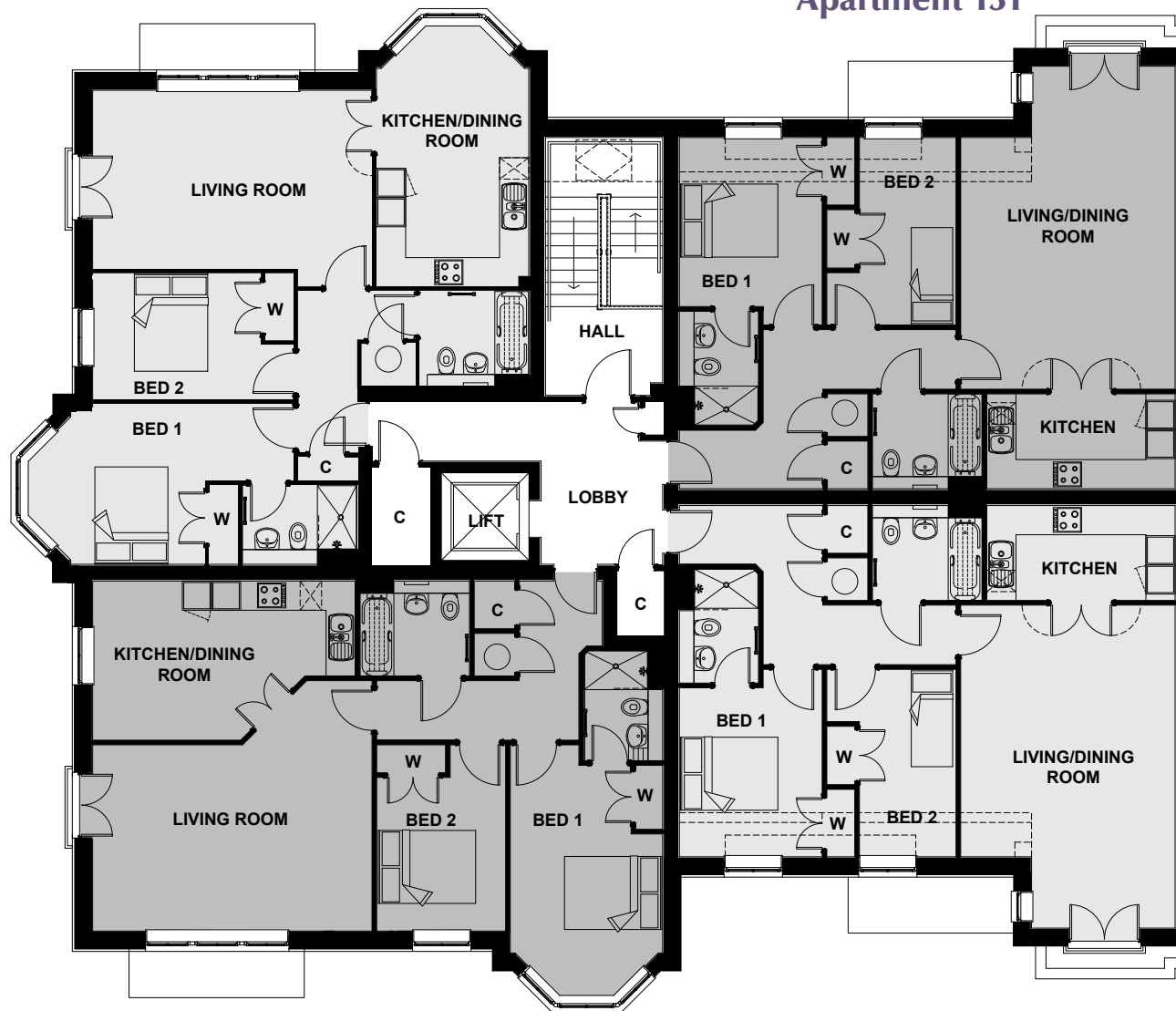
APARTMENT 129	METRIC	IMPERIAL
KITCHEN/DINING	5.38M x 3.26M	17'8" x 10'8"
LIVING ROOM	5.72M x 5.13M	18'9" x 16'10"
BEDROOM 1	3.11M x 5.16M	10'3" x 16'11"
EN SUITE	1.61M x 2.25M	5'3" x 7'4"
BEDROOM 2	2.64M x 7.81M	8'8" x 12'6"
BATHROOM	2.24M x 1.84M	7'4" x 6'4"

APARTMENT 130	METRIC	IMPERIAL
KITCHEN/DINING	3.12M x 5.37M	10'3" x 17'8"
LIVING ROOM	5.72M x 4.03M	18'9" x 13'2"
BEDROOM 1	5.47M x 3.28M	17'11" x 10'9"
EN SUITE	2.34M x 1.61M	7'8" x 5'3"
BEDROOM 2	4.12M x 2.59M	13'6" x 8'6"
BATHROOM	2.24M x 1.94M	7'4" x 6'4"

APARTMENT 131	METRIC	IMPERIAL
KITCHEN	3.85M x 1.94M	12'8" x 6'4"
LIVING/DINING	4.39M x 6.62M	14'5" x 21'9"
BEDROOM 1	2.92M x 3.84M	9'7" x 12'7"
EN SUITE	1.61M x 2.34M	5'3" x 7'8"
BEDROOM 2	2.64M x 3.84M	8'8" x 12'7"
BATHROOM	2.24M x 1.94M	7'4" x 6'4"

APARTMENT 132	METRIC	IMPERIAL
KITCHEN	3.85M x 1.94M	12'8" x 6'4"
LIVING/DINING	4.39M x 6.62M	14'5" x 21'9"
BEDROOM 1	2.92M x 3.84M	9'7" x 12'7"
EN SUITE	1.61M x 2.34M	5'3" x 7'8"
BEDROOM 2	2.64M x 3.84M	8'8" x 12'7"
BATHROOM	2.24M x 1.94M	7'4" x 6'4"

Apartment 130



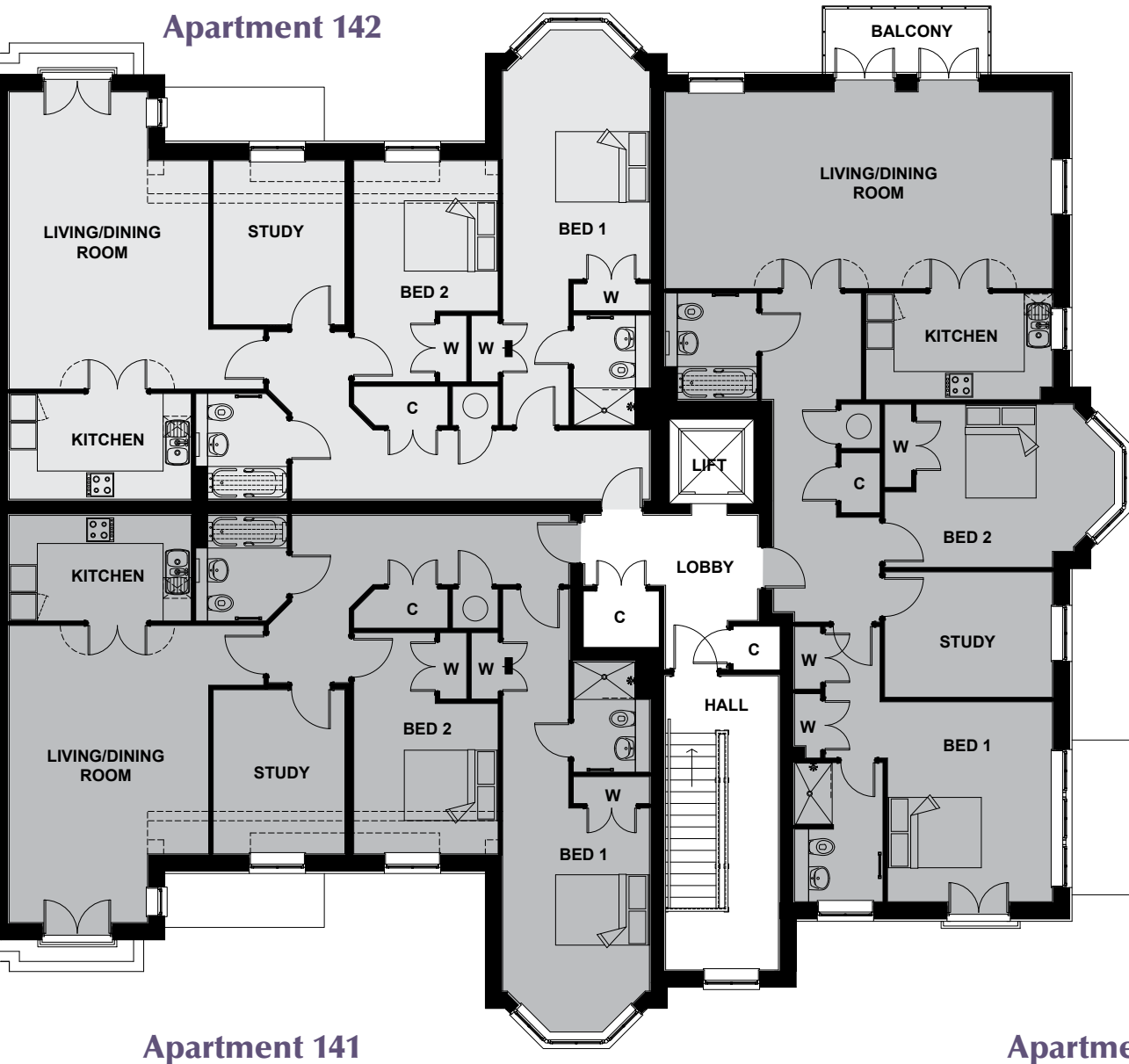
Apartment 129

Apartment 131

Apartment 132

W = Wardrobe C = Cupboard

Second Floor



APARTMENT 141	METRIC	IMPERIAL
KITCHEN	3.87M x 2.24M	12'8" x 7'4"
LIVING/DINING	4.24M x 6.32M	13'11" x 20'9"
BEDROOM 1	3.11M x 4.79/9.47M	10'3" x 15'9"/31'11"
EN SUITE	1.61M x 2.34M	5'3" x 7'8"
BEDROOM 2	3.06M x 4.70M	10'1" x 15'5"
BATHROOM	1.94M x 2.24M	6'4" x 7'4"
STUDY	2.80M x 3.49M	9'2" x 11'5"

APARTMENT 142	METRIC	IMPERIAL
KITCHEN	3.87M x 2.24M	12'8" x 7'4"
LIVING/DINING	4.24M x 6.32M	13'11" x 20'9"
BEDROOM 1	3.11M x 5.33/8.46M	10'3" x 17'6"/27'9"
EN SUITE	1.61M x 2.34M	5'3" x 7'8"
BEDROOM 2	3.06M x 4.70M	10'1" x 15'5"
BATHROOM	1.94M x 2.24M	6'4" x 7'4"
STUDY	2.79M x 3.49M	9'2" x 11'5"

APARTMENT 143	METRIC	IMPERIAL
KITCHEN	3.96M x 2.26M	13'0" x 7'5"
LIVING/DINING	8.23M x 4.18M	27'0" x 13'8"
BEDROOM 1	3.50/ 5.47M x 4.25/5.84M	11'6"/18'0" x 13'11"/19'2"
EN SUITE	1.87M x 2.95M	6'2" x 9'8"
BEDROOM 2	4.91M x 3.47M	16'1" x 11'4"
BATHROOM	1.94M x 2.25M	6'4" x 7'5"
STUDY	3.56M x 2.67M	11'8" x 8'9"



Bramshott
— PLACE —
VILLAGE



Make your move

If you think you'd enjoy the lifestyle at Bramshott Place Village,
visit our website at:

***www.bramshottplace.co.uk or call our agents,
Clarke Gammon Wellers on 01428 722800.***



A development by
Helical Bar plc and Urban Renaissance Villages Ltd.

CLARKE  GAMMON
WELLERS

Every care has been taken to ensure the accuracy of this brochure. The contents do not form part of or constitute a warranty, or part of any contract. The exactness of room sizes cannot be guaranteed. The developer reserves the right to change the specification of properties within this brochure without notice. Architectural illustrations and artists impressions are a guide only. Colour accuracy of brick and tile finishes cannot be guaranteed. Illustrations of external features, such as walls or fencing, are liable to alterations. Landscape shown is mature and will not be supplied as such.