

The Holman

3 Bedroom Cottage



Bramshott
PLACE
VILLAGE



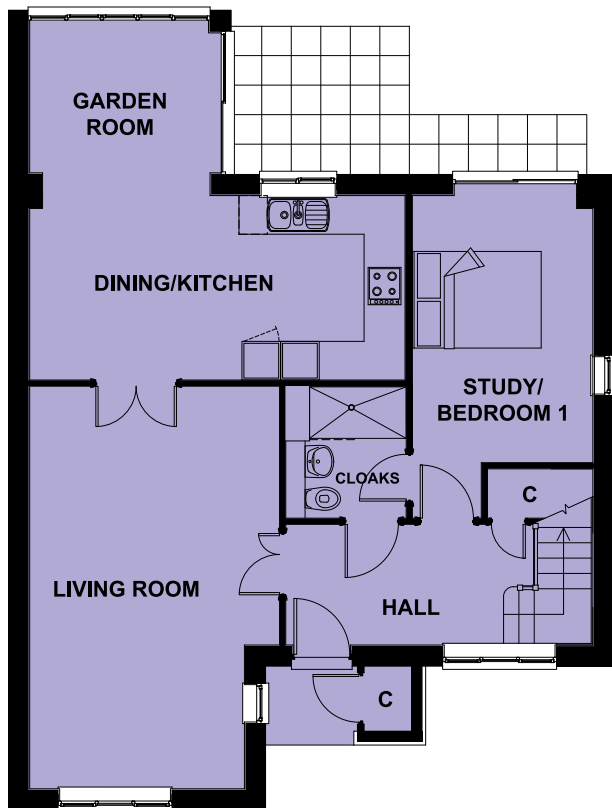
CLARKE  GAMMON
WELLERS

Telephone: 01428 722800

Special features include separate kitchen/dining area opening onto the garden room and good sized separate living room providing a fabulous entertaining space.

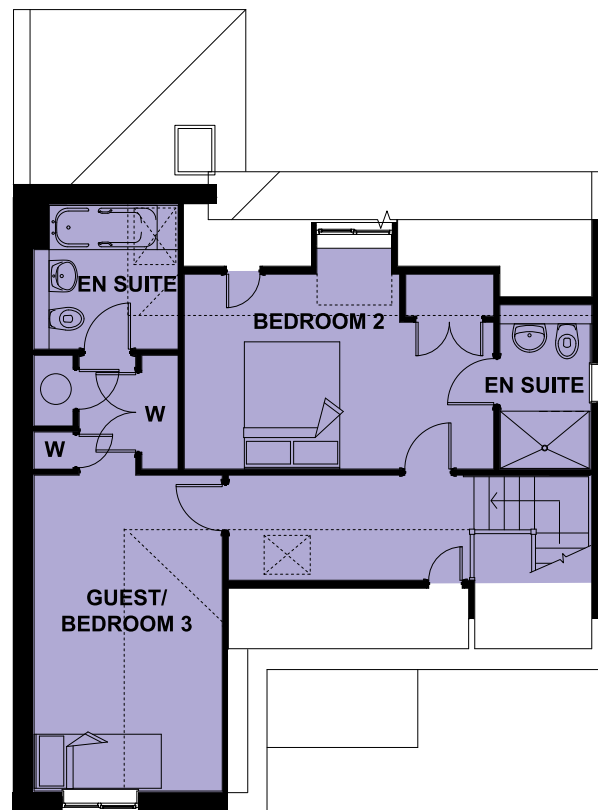


The Holman - 3 Bedroom Cottage



GROUND FLOOR	METRIC	IMPERIAL
DINING/KITCHEN	5.81M x 2.85M	19'1" x 9'4"
LIVING ROOM	3.87M x 6.24M	12'8" x 20'6"
STUDY/BEDROOM 1	2.79M x 4.99M	9'2" x 16'5"
CLOAKS	1.86M x 2.03M	6'1" x 6'8"
GARDEN ROOM	2.89M x 2.28M	9'6" x 7'6"

W = Wardrobe C = Cupboard



FIRST FLOOR	METRIC	IMPERIAL
BEDROOM 2	4.87M x 3.08M	16' x 10'1"
EN SUITE	1.39M x 2.59M	4'7" x 8'6"
GUEST/BEDROOM 3	2.26M x 6.84M	7'5" x 22'5"
EN SUITE	2.25M x 2.25M	7'5" x 7'5"

Landing and additional windows to cottages are on selected plots only. Please ask for details.

Every care has been taken to ensure the accuracy of this brochure. The contents do not form part of or constitute a warranty, or part of any contract. The exactness of room sizes cannot be guaranteed. The developer reserves the right to change the specification of properties within this brochure without notice. Architectural illustrations and artists impressions are a guide only. Colour accuracy of brick and tile finishes cannot be guaranteed. Illustrations of external features, such as walls or fencing, are liable to alterations. Landscape shown is mature and will not be supplied as such.