



Bramshott
PLACE
VILLAGE

The York

3 Bedroom Cottage



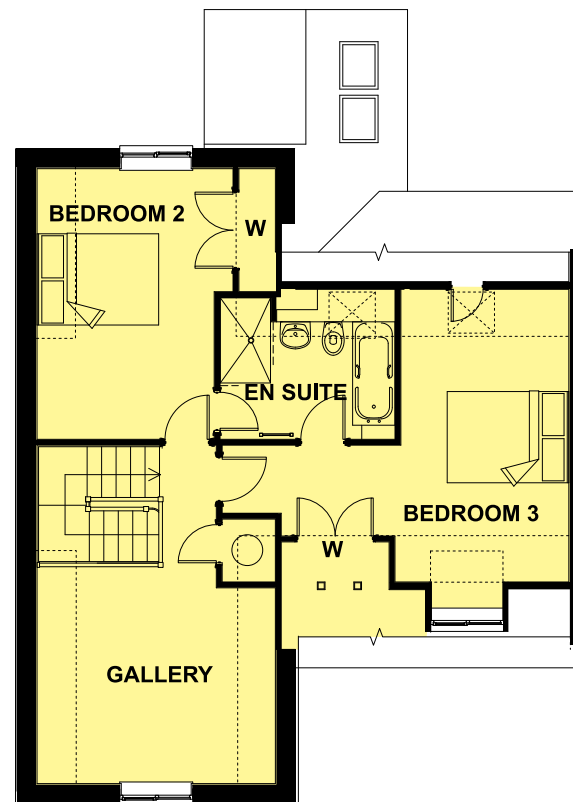
CLARKE  GAMMON
WELLERS

Telephone: 01428 722800

The open plan living room, well proportioned kitchen/dining room and upstairs gallery area provides substantial flexible living accommodation.



The York - 3 Bedroom Cottage



GROUND FLOOR	METRIC	IMPERIAL
KITCHEN	4.11M x 4.38M	13'6" x 14'5"
LIVING/DINING	4.08/4.46M x 6.97M	13'4"/14'8" x 22'10"
STUDY/BEDROOM 1	2.75M x 3.46M	9' x 11'4"
CLOAKS	1.69M x 2.41M	5'6" x 7'1"
GARDEN ROOM	2.28M x 2.8M	7'6" x 9'2"

FIRST FLOOR	METRIC	IMPERIAL
BEDROOM 2	3.21M x 4.44M	10'6" x 14'7"
BEDROOM 3	2.6/5.71M x 4.8M	8'6"/18'9" x 15'9"
EN SUITE	3M x 2.45M	9'10" x 8'1"
GALLERY	3.91M x 3.55M	12'10" x 11'8"

W = Wardrobe C = Cupboard

Landing and additional windows to cottages are on selected plots only. Please ask for details.

Every care has been taken to ensure the accuracy of this brochure. The contents do not form part of or constitute a warranty, or part of any contract. The exactness of room sizes cannot be guaranteed. The developer reserves the right to change the specification of properties within this brochure without notice. Architectural illustrations and artists impressions are a guide only. Colour accuracy of brick and tile finishes cannot be guaranteed. Illustrations of external features, such as walls or fencing, are liable to alterations. Landscape shown is mature and will not be supplied as such.